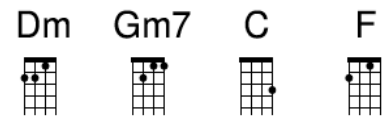


I SAY A LITTLE PRAYER - Burt Bacharach/Hal David

INTRODUCTION

Dm//// Gm7//// Gm7//// C// F////
Bb//// A7////

Say little prayer for you



VERSE 1

Dm//// Gm7//// Gm7//// C// F////

- The moment I wake up - before I put on my makeup *make up*

Bb//// A7////

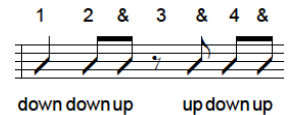
I say a little prayer for you

Dm//// Gm7//// Gm7//// C// F////

- And while combing my hair now - and wondering what dress to wear now *wear now*

Bb//// A7////

I say a little prayer for you



CHORUS

Bb// C7// Am7// Dm^ Dm* Dm* F7* F7*

Forever and ever - you'll stay in my heart and I will love you

Bb// C7// Am7// Dm^ Dm* Dm* F7* F7*

Forever and ever we never will part oh how I love you

Bb// C7// Am7// Dm^ Dm* Dm* F7* F7*

Together - together - that's how it must be to live with - out you

Bb* Bb* Bb* Bb* Bb* Bb* A7//// A7////

Would on - ly mean heart-break for me

VERSE 2

Dm//// Gm7//// Gm7//// C// F////

- I run for the bus - dear - but while riding I think of us - dear *us dear*

Bb//// A7////

I say a little prayer for you

Dm//// Gm7//// Gm7//// C// F////

- And at work I just take time - and all through my coffee break time *break time*

Bb//// A7////

I say a little prayer for you

DOUBLE CHORUS

Bb// C7// Am7// Dm^ Dm* Dm* F7* F7*

Forever and ever - you'll stay in my heart and I will love you

Bb// C7// Am7// Dm^ Dm* Dm* F7* F7*

Forever and ever we never will part oh how I love you

Bb// C7// Am7// Dm^ Dm* Dm* F7* F7*

Together - together - that's how it must be to live with - out you

Bb* Bb* Bb* Bb* Bb* Bb* A7//// A7////

Would on - ly mean heart-break for me - no-body but but me

Bb// C7// Am7// Dm^ Dm* Dm* F7* F7*
 Forever and ever - you'll stay in my heart and I will love you
Bb// C7// Am7// Dm^ Dm* Dm* F7* F7*
 Forever and ever we never will part oh how I love you
Bb// C7// Am7// Dm^ Dm* Dm* F7* F7*
 Together - together - that's how it must be to live with - out you
Bb* Bb* Bb* Bb* Bb* Bb* A7//// A7////
 Would on - ly mean heart-break for me

BRIDGE

Dm//// Gm7//// Gm7//// C//// C////
 - My darling believe me *believe me* for me there is no one
F//// F// Gm7// F//// F// Gm7//
 But you Please love me - true I'm in love
Answer my prayer - baby Answer my prayer - baby
F//// F// Gm7// F//// F// Gm7//
 With you Answer my prayer now baby Say you love
Answer my prayer - baby Answer my prayer - baby
F//// F// Gm7// F//// F// Gm7//
 Me too Answer my prayer now baby
Answer my prayer - baby Answer my prayer - baby

CHORUS

Bb// C7// Am7// Dm^ Dm* Dm* F7* F7*
 Forever and ever - you'll stay in my heart and I will love you
Bb// C7// Am7// Dm^ Dm* Dm* F7* F7*
 Forever and ever we never will part oh how I love you
Bb// C7// Am7// Dm^ Dm* Dm* F7* F7*
 Together - together - that's how it must be to live with - out you
Bb* Bb* Bb* Bb* Bb* Bb* A7//// A7////
 Would on - ly mean heart-break for me - no-body but but me

BRIDGE/OUTRO

Dm//// Gm7//// Gm7//// C//// C////
 - My darling believe me *believe me* for me there is no one
F//// F// Gm7// F//// F// Gm7//
 But you Please love me - true I'm in love
Answer my prayer - baby Answer my prayer - baby
F//// F// Gm7// F//// F// Gm7//
 With you Answer my prayer now baby Say you love
Answer my prayer - baby Answer my prayer - baby
F//// F// Gm7// F//// F// Gm7// F*
 Me too Answer my prayer now baby
Answer my prayer - baby Answer my prayer - baby

ALTERNATIVE CHORDS

