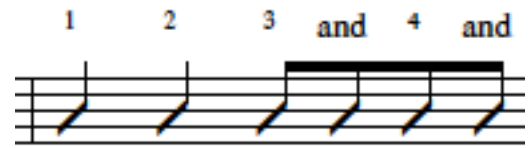


RING OF FIRE - Johnny Cash



down down down up down up

INTRODUCTION + TAB A

TAB A LEAD IN after count 1-2-3-4-1 (or if you're strumming one bar of **NC////** after 1-2-3-4)

A//// D// A//// A////
A//// D// A//// A////

VERSE 1 + TAB B - C - B

A//// A// D// A//// D// A//// A////
Love - is a burning thing
A//// A// D// A//// D// A//// A////
And it makes - a fiery ring
A//// A// D// A//// D// A//// A////
Bound - by wild de-sire
A//// D// A//// A////
I fell into a ring of fire

CHORUS + TAB D

E7//// E7//// D//// A////
I fell in to a burning ring of fire
E7//// E7//// D//// A////
I went down - down - down and the flames went higher
A//// A//// A// D// A////
And it burns - burns - burns - the ring of fire
A// D// A//// A////
- The ring of fire **TAB A**

INSTRUMENTAL + TAB A

A//// D// A//// A////
A//// D// A//// A////

CHORUS + TAB D

E7//// E7//// D//// A////
I fell in to a burning ring of fire
E7//// E7//// D//// A////
I went down - down - down and the flames went higher
A//// A//// A// D// A////
And it burns - burns - burns - the ring of fire
A// D// A//// A////
- The ring of fire

VERSE 2 + TAB B - C - B

A/// A/ D// A/// D// A/// A///

The taste - of love is sweet

A/// A/ D// A/// D// A/// A///

When hearts - like ours meet

A/// D// A/// D// A/// A///

I fell for you like a child

A/// A/ D// A/// A///

Oh - but the fire went wild

DOUBLE CHORUS/OUTRO + TAB D

E7/// E7/// D/// A///

I fell in to a burning ring of fire

E7/// E7/// D/// A///

I went down - down - down and the flames went higher

A/// A/// A/ D// A///

And it burns - burns - burns - the ring of fire

A/ D// A/// A///

- The ring of fire

E7/// E7/// D/// A///

I fell in to a burning ring of fire

E7/// E7/// D/// A///

I went down - down - down and the flames went higher

A/// A/// A/ D// A///

And it burns - burns - burns - the ring of fire

A/ D// A/// A///

- The ring of fire

A/// A/// A/ D// A///

And it burns - burns - burns - the ring of fire

A/ D// A///

- The ring of fire

A/ D// A/// D// A*

- The ring of fire **TAB B**

ALTERNATIVE CHORDS

